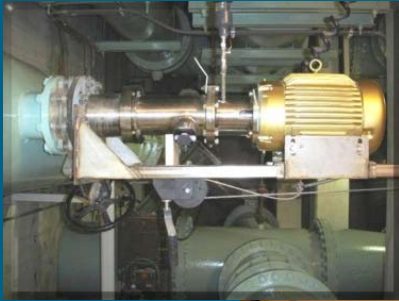


PG-1 PACKING GLAND FLANGE ASSEMBLY



PACKING GLAND FLANGE ASSEMBLY

The INTRUDRRR series 35F and 35FP are supplied with a PG-1 316 stainless steel flanged packing gland and IR-1 insertion/retraction system for unit installation and removal from the pipeline under pressure/flow conditions. They easily install vertically or horizontally on specified 6" or 8" ANSI flanges.

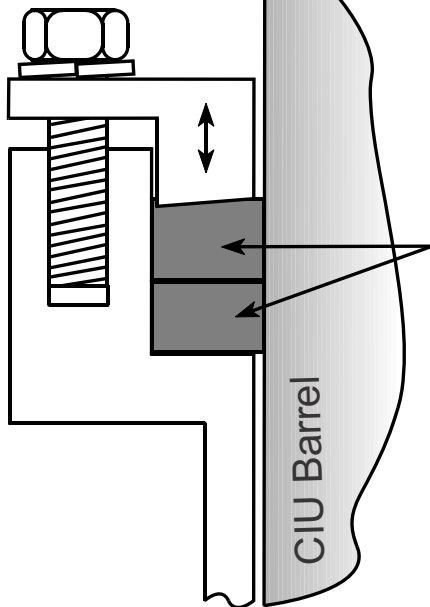
The packing gland compression design utilizes Teflon packing rope and provides a water tight seal around the barrel of the CIU in low and high pressure pipeline applications.

During installation or insertion the packing gland compression bolts are loosened to allow the CIU barrel to slide past the knife gate valve to the specified insertion depth in the pipeline.

An optional tapped $\frac{1}{2}$ " plug is available on the side of the packing gland for draining water from the barrel after the knife gate valve is closed when retracting the CIU.

All materials of construction are 316 stainless steel including bolts and washers.

Compression
Bolts



Teflon
Packing
Rope
Qty. 2

CIU Barrel

