

SAVVY 5 CIU VARIABLE FREQUENCY DRIVE CONTROL PANEL



SAVVY 5 VFD CONTROL PANEL

The SAVVY 5 pump motor status monitor and controller panel is designed for use with all GAS MASTRRR series submersible units and INTRUDRRR series inline mixers.

The SAVVY 5 panel is Nema 4X rated with a non-metallic FRP enclosure for indoor/outdoor service.

Components include a fused disconnect switch, CPT, VFD with keypad display, status lamps (run, off, and alarm), HOA switch, mechanical run time hour meter, and lightning surge arrester.

VFD features include high/low voltage, over/under current, and high/low speed settings.

The PM24 monitor provides temperature sensor monitoring of the submersible Franklin Electric motor.

The display keypad supplies realtime data on motor amperage, voltage, speed, and fault conditions.

Output contacts provide information to remote scada systems.

The panels are wired for three phase service with a variety of voltage options from 200-575 VAC. For series 32X x-proof motor applications the panels include seal failure moisture detection and high temperature indication and control. Optional audible/visual alarms available. The panels are tested, programmed and ready for service with your CIU.

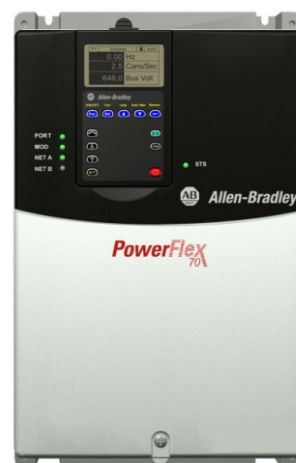
FEATURES:

- * NEMA 4X FRP enclosure with fused disconnect switch for operator safety.
- * High/low voltage, over/under current, phase loss, and motor high temperature protection.
- * External motor run-time hour meter (mechanical).
- * Terminal blocks for remote indication and control.
- * Remote input signal or local speed control.
- * Programmable keypad and Realtime display of motor status information.



Optional UL Listed quick power cord disconnects are available for easy installation and removal of the CIU. These quick disconnects are NEMA 4X rated and install at the lower exterior of The SAVVY 5 panel.

Allen-Bradley VFD



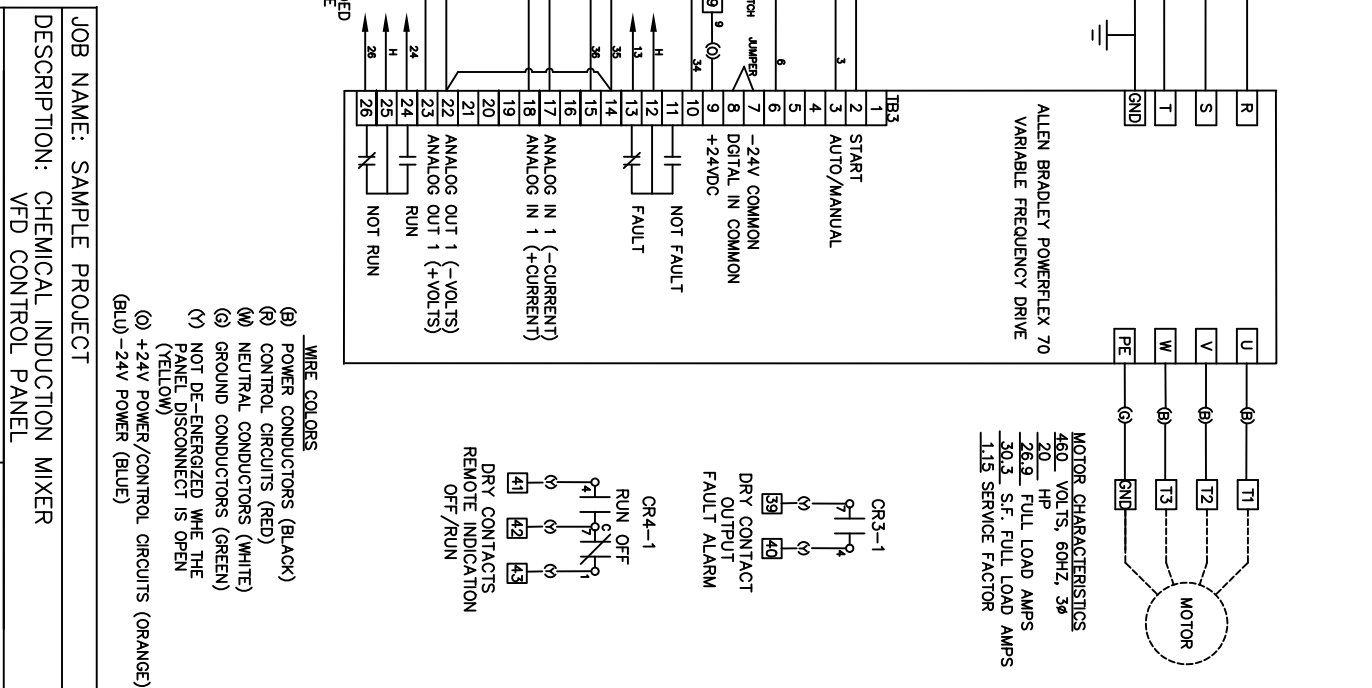
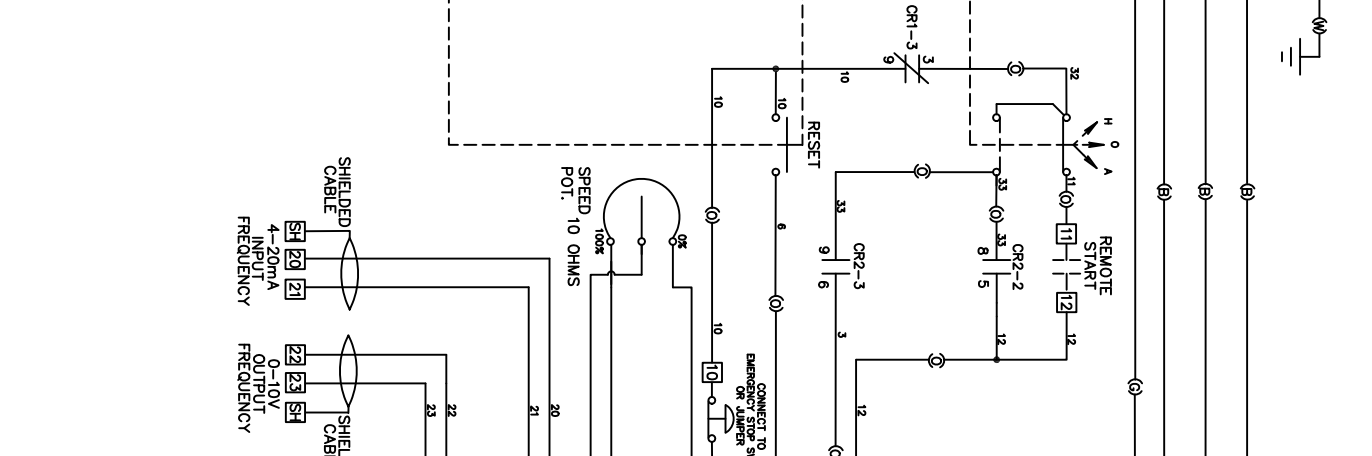
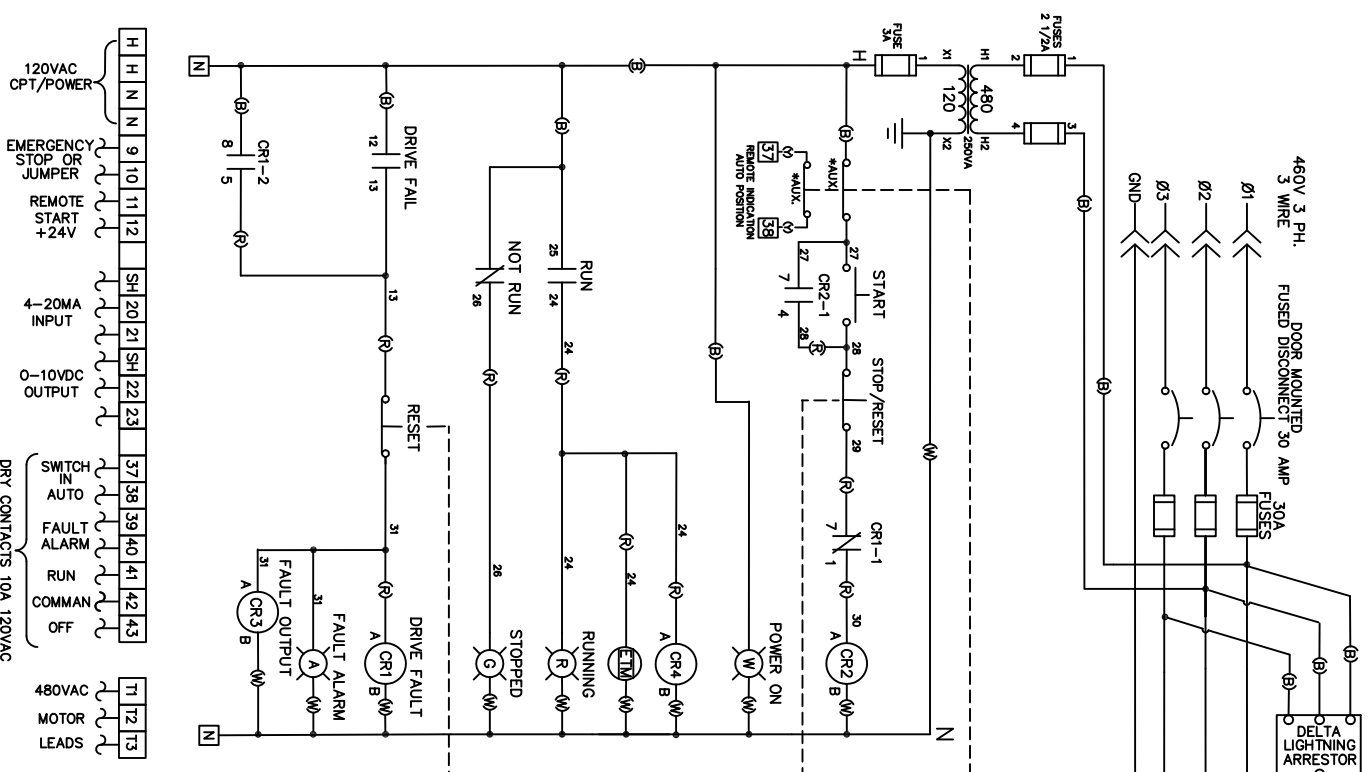
HIM Keypad



THE MASTRRR COMPANY

www.gasmastrrr.com mastrrr@airmail.net
1-800-299-6836 1-800-226-2659 Fax





WIRE COLORS

- (B) POWER CONDUCTORS (BLACK)
- (R) CONTROL CIRCUITS (RED)
- (W) NEUTRAL CONDUCTORS (WHITE)
- (G) GROUND CONDUCTORS (GREEN)
- (Y) NOT DE-ENERGIZED WHEN THE PANEL DISCONNECT IS OPEN (YELLOW)
- (O) +24V POWER/CONTROL CIRCUITS (ORANGE)
- (BLU) -24V POWER (BLUE)

DRY CONTACTS

- CR4-1 RUN OFF
- CR3-1 DRY CONTACT OUTPUT FAULT ALARM
- CR3-3 DRY CONTACTS REMOTE INDICATION OFF/RUN

MOTOR CHARACTERISTICS

460 VOLTS, 60HZ, 3Ø
 20 HP
 26.9 FULL LOAD AMPS
 30.3 S.F. FULL LOAD AMPS
 1.15 SERVICE FACTOR

Allen Bradley PowerFlex 70 Variable Frequency Drive

DATE: 7/3/08

THE MASTERR COMPANY
 FRIENDSWOOD, TEXAS (800)-299-6836

JOB NAME: SAMPLE PROJECT

DESCRIPTION: CHEMICAL INDUCTION MIXER VFD CONTROL PANEL

DATE: 7/3/08

SHEET NO.: 2

FILE NO.: 1052A

This drawing, the ideas it presents, and its method of preparation and use are the property and invention of MASTERR COMPANY. No use of this drawing shall be made, nor shall it be transferred, copied, reproduced or disclosed without the written permission of MASTERR COMPANY. This drawing shall be returned to MASTERR COMPANY upon request.

EXTERNAL TERMINAL BLOCK NOTE: CONTROL TERMINAL BLOCK TORQUE NM (LB. IN.) .8 (7.1)

120VAC OPT/POWER
 EMERGENCY STOP OR JUMPER
 REMOTE START +24V
 4-20MA INPUT
 0-10VDC OUTPUT
 SWITCH IN AUTO
 FAULT ALARM
 RUN
 COMMAN OFF
 DRY CONTACTS 10A 120VAC
 480VAC MOTOR LEADS